



**MDC Co, Ltd**

www.mdc-smt.co.jp

# ***Luna NX PPP Ball P&P machine***



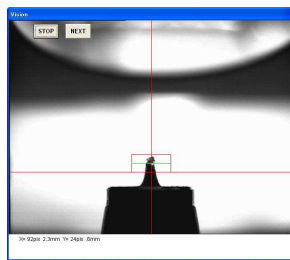
This system is an automatic solder ball pick & placer. Up to 0.3mm from 1.0mm ball can be placed precisely and useful for prototyping of BGA/CSP and also re-balling to repair a BGA/CSP.

The system utilizes Luna NX PPP main frame, flux applicator, ball pockets and specially prepared software.

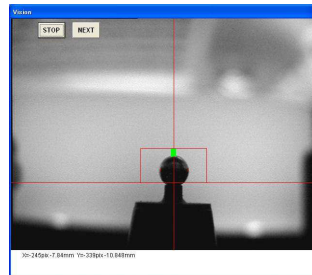
## **Luna NX PPP bench top**



**Flux applicator and ball pockets**



**Stamping needle and flux**



**Ball on the nozzle**

**If required, stamping feature supplies flux on the target using stamping needle.**

**The flux applicator makes flux film on a rotary disk and stamping needle is dipped in and amount of flux attached on the needle tip is measure by vision system.**

**A ball picked up from ball pocket is also measured by vision system.**

**Placement accuracy:**

**+/-0.05mm (0.08mm 3 sigma)**

**3 ball pockets are prepared and 2 vacuum nozzles and 2 stamping needle are included.**

---

**LUNA NX PPP Ball bench top**

Substrate size max	150 x 150mm
Min	50mm x 50mm
Thickness	0.8 – 2.3mm
ball pocket (feeder)	3
Flux stamping (Option)	
Placement rate	1500-2000 cph with stamping 700-1000 cph
Placement accuracy	+/- 0.05mm +/-0.08mm 3 sigma
Applicable ball diameter	0.3mm~1.0mm
Drives	X/Y stepping motor 0.015mm step Z stepping motor 0.02mm step
Machine size	550(W) X550(D) X630(H)
Weight	45Kg
Power	AC 100-240V 50/60Hz single phase
Air	Integrated vacuum pump
Controller	IBM PC equivalent Windows XP/7
Environment	Room temp 10-30 centigrade RH 50-80%
Color	Cover smoke gray

---

subject to change without notice

**Manufacturer MDC co., ltd.**

1-51-4, KumegawakouzyouDanchi202

Kumegawa-machi, Higashimurayama

Tokyo Japan 189-0003

Tel: 81-42-391-2111 Fax:81-42-391-2113

URL: [www.mdc-smt.co.jp](http://www.mdc-smt.co.jp)

e-mail: [info@mdc-smt.co.jp](mailto:info@mdc-smt.co.jp)

May 2013