

***LUNA Exp Bench top series***  
***with Touchless Flying Vision***

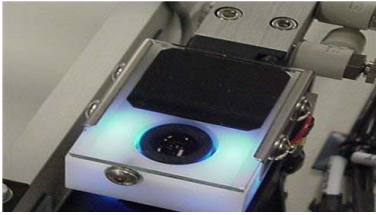


**LUNA EXP Bench top CONSOLE**

- **MOST COST EFFECTIVE SMT MOUNTER**
- **WIDE COMPONENT COVERAGE 0201 (0603 –metric) CHIP up to 40mm SQUARE BGAs, FINE PITCH QFPs (15 mil) , CSPs etc**
- **FEEDER CAPACITY OF 48**
- **PLACEMENT SPEED OF 2500 CPH WITH FLYING VISION**
- **WINDOWS BASED SOFTWARE**

**The LUNA series of Mounters are the most cost effective SMT Mounter offering widest component range thanks to new technology BLUE ILLUMINATION fully Automatic Vision System.**

## LUNA VISION



Bottom LUNA vision camera

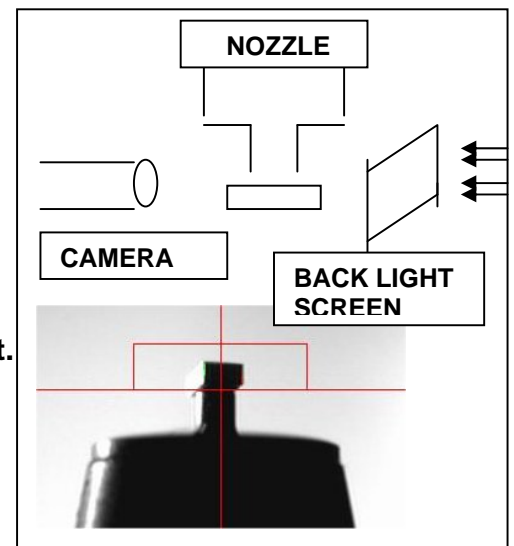
The LUNA VISION SYSTEM comes with **FIXED BOTTOM CAMERA** and with **BLUE ILLUMINATION**, that is unaffected by ambient light. Light. (The Vision System also includes **SIDE** and **BOTTOM LIGHTING** techniques). The LUNA VISION on its own can handle wide component from 0201 chip up to 40mm Square size GA/QFP, Fine Pitch devices up to 15mil. The Placement speed will be 1000 cph, with placement accuracy of 0.05mm

### FLYING LUNA VISION (Patented)

For improving the speed on chip components up to 4000 cph, LUNA series machines can be fitted with **Optional FLYING CAMERA** again with **BLUE ILLUMINATION**, offering **TOUCHLESS ON THE FLY VISION ALIGNMENT**.

The Placement Head is fitted with a tiny camera on One side of the Nozzle and a **Back Light Screen** on The other side to view the component as black Images. The processing algorithm then calculates X, Y component width and center and also Component thickness for precise alignment and placement. The **FLYING VISION** head can handle from 0201 chip up to 10mm square components or 16 pin SOIC.

### FLYING VISION HEAD



### Dispenser option

Temperature controlled digital dispenser is option and the height sensor enable to dispense on a warped PCB.



## AT A GLANCE INSPECTION



Advanced software and a full-color camera allows these machines to not only pick & place a wide range of parts, but to perform post-placement inspections as well. Not only is programming time reduced, because the software automatically uses placement data for inspection, but so are personnel requirements; only one person is needed to perform both placement and inspection tasks. Assemblies are inspected step by step: a shape that corresponds to the part type and preset placement tolerances is superimposed onto an image of the actual part on the board, allowing the operator to verify placement quality at a glance before the system moves on to

the next part.

## WINDOWS BASED OPERATING SYSTEM

The basic operating system is **WINDOWS** based  
All aspects like Programming, Operation,  
Maintenance is thru windows making usage  
Quite easy.

## OTHER STANDARD FEATURES

- AC Servo Motor Drives for X,Y Movements
- Servo Motor Drives for Z axis movement
- Full Color FIDUCIAL/TEACHING CAMERA
- Universal CAD Conversion software
- Console
- PC and Monitor
- 2 Feeder bases

## OPTIONS

- Tape Feeders : 8, 12, 16, 24, 32,44 mm Feeders
- Stick Feeder : Single Lane or Multi-Lane Vibratory Stick Feeder
- 8 lane Bulk feeder for 0402
- IC Tray Feeder : Manual Tray
- Bar code reader for tape reel data input and check

- Dispenser : Digital Dispenser with height Sensor  
Available only on one head models  
PCB Conveyor: Up to Max PCB width of 200mm



**SPECIFICATIONS**

PARAMETER	EXP Bench top
PCB SIZE Max	250mm X 350mm
Min	50mm x 50mm
Thick	0.8 – 2.3mm
Feeder Capacity	48
Placement Speed	1000 cph for QFP 2500 cph for chip
Placement Accuracy	+ / - 0.1mm by Flying Luna Vision +/- 0.05mm with Luna Bottom Vision
Applicable Components	0201 chip to 40mm square components with Luna Bottom Vision , Fine Pitch up to 15mil. 0201 chip to 16 pin SOIC with Flying Vision
Drives	X, Y axis , AC Servo Motor 0.01mm step Theta axis Stepping Motor 0.03 deg step Z axis Servo Motor 0.02mm step
Dimensions with Console	700(W) X 740 (D) X 660 (H)
Weight	50Kg
Power Supply	AC 100 V to 240 V, 50 Hz, Single Phase
Air Supply	0.5 Mpa, 60 – 80 NI / min clean dry air
Controller	IBM PC Compatible RAM 256 M, HDD 1G min Windows Xp / 98/ Me compatible
Environment	Temperature 10 to 30 deg centigrade, Humidity 50-80%
Body Color	Ivory Semi-mat
Feeder Options	Tape Feeder 8,12,16,24,32,44mm Max Capacity: 8mm-48, 12mm & 16mm – 24 , 4mm – 16, 32mm – 12 Stick Feeder : Single, Multilane Vibratory Stick IC Tray : Single Tray fitting on one feeder base (or) Single Tray fitting in PCB Area with reduced PCB Size Bar code reader for tape reel. Tape feeder stocker (with /without cart)
Dispenser Option	Digital Dispenser with Height Sensor , 6000 dots per hour
PCB Conveyor Option	L to R , Edge Reference Max PCB Width 200mm
Exchangeable Feeder Base	Exchangeable Feeder Base option is Factory Fitted

**Subject to change without notice**

**Aug, 2009**

<b>Distributor</b>
--------------------

**Manufacturer**  
**MDC Co., Ltd**  
 1-51-4, KumegawaKouzyouDanchi202  
 Kumegawa-machi, Higashimurayama  
 Tokyo, Japan 189-0003  
 Tel: 81-42-391-2111  
 Fax: 81-42-391-2113  
 e-mail: info@mdc-smt.co.jp  
 URL: www.mdc-smt.co.jp